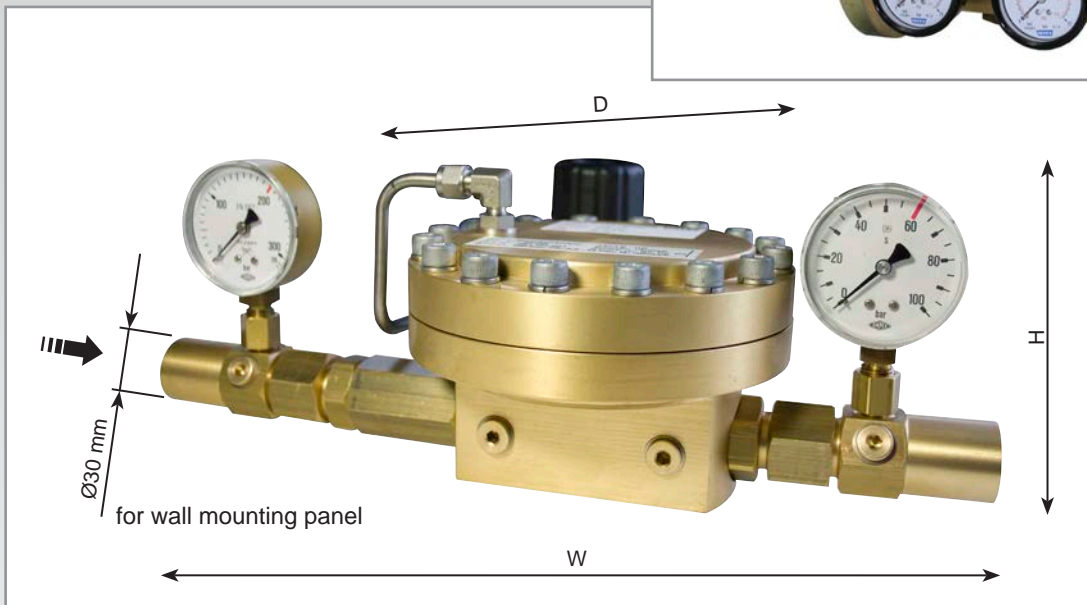


**PRESSURE REGULATOR**

**Dome Pressure Regulator complete solution - own medium controlled**

The complete solution - powerful and service reduced Dome Pressure Regulator applicable for mounting in pipe-works.



**Benefits**

- anytime changeable working pressure (readjustable) – e.g. at fluctuation of temperature
- provides constant working pressure by dynamic control
- no disperse of pilot gas to the environment – closed system
- pressure regulator and gauges may be mounted in any position /orientation by rotating inlet and outlet connections
- additional connections (G 1/8 F) in the inlet and outlet range – e.g. pressure transmitter
- connection for wall mounting panel
- easy installation and removing

**Options**

- piloting by foreign gas available

**Operation / Usage**

Own medium controlled pressure regulator with dome pressure regulator for mounting in pipe-works. Type 757 LE, 747 LE, 737 LE-HD, 737 LE and 772 LE – see data sheet DR 2A.

**Function**

The dome pressure regulator is used in combination with pilot pressure regulator for adjusting the required working pressure (outlet pressure).

The controlled gas (own medium) is used for the supply of pilot pressure regulator (re-controllable, closed diaphragm) by pilot gas.

**Maintenance**

Annual testing of body leak tightness is recommended. The dirt filter may be replaced if required.

**Approvals**

Company certified according to ISO 9001 and PED 97/23/EC Module H

**Other models, options and accessories available on request.**

**Please identify the individual gases at the time of enquiring!**

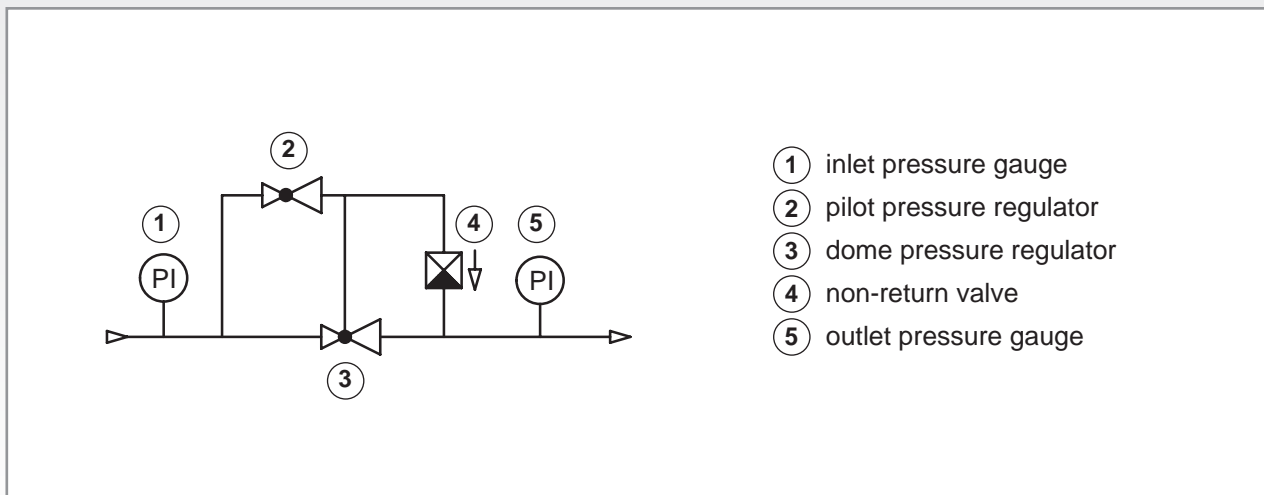
**PRESSURE REGULATOR**

**Dome Pressure Regulator complete solution - own medium controlled**

Basic Model	Gases max. inlet pressures [PSI]	Dimensions H x W x D [INCH]	Weight [lb]	Inlet and Outlet	Kv-Value	Outlet pressure manometer [PSI]	Order-No.
<b>NEW</b> 757 LE (278-061)	Ar, N <sub>2</sub> , H <sub>2</sub> , O <sub>2</sub> He, CO <sub>2</sub>	9.84 x 11.02 x 8.27	49.60	Flange DN 50 PN 40 DIN 2656 with O-ring 2.5x0.1 inch	15	29 – 435	192-031
	CO <sub>2</sub> 363 O <sub>2</sub> 435 others 580					29 – 232	192-015
<b>NEW</b> 747 LE (278-059)	Ar, N <sub>2</sub> , H <sub>2</sub> , O <sub>2</sub> He, CO <sub>2</sub>	5.51 x 12.99 x 8.07	26.45	1" NPT F	3.6	29 – 435	192-022
	CO <sub>2</sub> 363 O <sub>2</sub> 435 others 580					29 – 232	192-027
						29 – 87	192-028
737 LE-HD (278-055)	Ar, N <sub>2</sub> , H <sub>2</sub> , O <sub>2</sub> He, CO <sub>2</sub>	5.51 x 14.96 x 9.05	26.45	3/4" NPT F	1.65	36 – 580	192-016
	CO <sub>2</sub> 870 O <sub>2</sub> 2900 others 4350					36 – 232	192-017
						29 – 145	192-018
						29 – 87	192-019
737 LE (278-051)	Ar, N <sub>2</sub> , H <sub>2</sub> , O <sub>2</sub> He, CO <sub>2</sub>	5.51 x 14.96 x 9.05	22.05	3/4" NPT F	2.4	29 – 130	192-020
	CO <sub>2</sub> 363 others 870					29 – 87	192-021
772 LE (278-052)	Ar, N <sub>2</sub> , H <sub>2</sub> , O <sub>2</sub> He, CO <sub>2</sub>	5.51 x 13.78 x 8.07	15.43		0.7	29 – 130	192-029
	CO <sub>2</sub> 363 O <sub>2</sub> 435 others 870					29 – 87	192-030

Other gases available on request

**F-SCHEMA**



Technical Data

H01/D2 subject to change