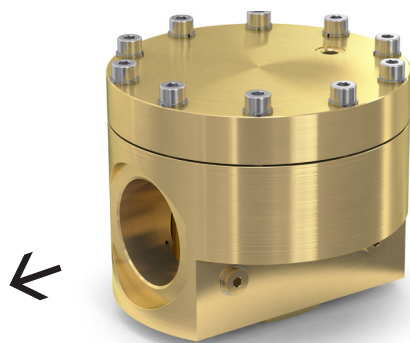
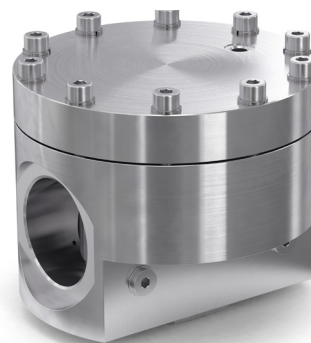


# DOMESTIC BACKPRESSURE REGULATOR DOMESTIC PRESSURE-SUSTAINING VALVE



BPR 2



BPR 2-ES

Backpressure regulator for precise control of low and medium inlet pressures.

## Features

- **Pilot Control Tube (PCT)**  
One of the features enabling highly accurate control of inlet pressure
- **Balanced Seat Design (BSD)**  
An inlet pressure balanced main valve ensures precision and high reliability
- Rapid and accurate monitoring of inlet pressure provides process reliability
- Available in brass or stainless steel (ES)
- Integrated connections for pilot gas and pressure gauges
- Inlet pressure regulation by external pilot pressure or proportional valve
- Simple to install and operate  
Can be positioned at any angle / orientation  
For indoor and outdoor installation.

## Operation / Usage

Ideal for process gas supply where constant pressure is required. For example pressure regulation from gas cushions in tanks

## Maintenance

Annual testing of body leak tightness is recommended depending on application.

## Approvals

Company certified according to ISO 9001, ISO 22000 and PED 2014/68/EU Module H

CE-marked according to PED 2014/68/EU

ATEX 2014/34/EU with ignition hazard analysis according to EN 1127-1, DIN EN 13463-1 and ZH1/200

Analysed for Food Safety per HACCP-Analysis

Fulfills the requirements of EU Regulations (EC) 1935/2004, and (EC) 2023/2006

Fulfills the requirements of German Food and Feed (LFGB) Law, and is suitable for contact with food gases

Designed for Oxygen Service in accordance with EIGA 13/20 and CGA G-4.4: Oxygen Pipeline and Piping Systems

Cleaned for Oxygen Service in accordance with EIGA 33/18 and CGA G-4.1: Cleaning of Equipment for Oxygen Service

## Available upon request

Certificates and test reports

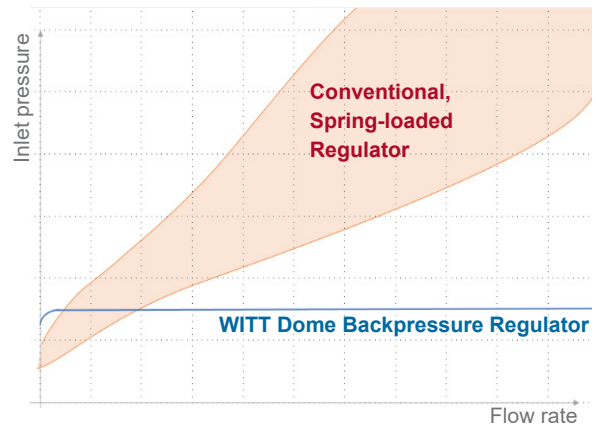
Switchover systems / parallel supply systems

Customer-specific / customised versions

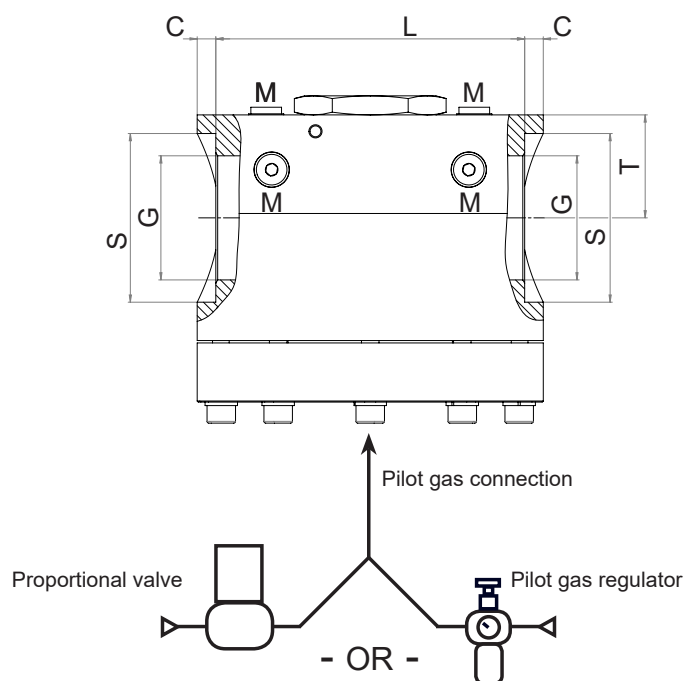
# DOMESTIC BACKPRESSURE REGULATOR DOMESTIC PRESSURE-SUSTAINING VALVE

	Model	
	BPR 2	BPR 2-ES
max. inlet pressure	CO <sub>2</sub> O <sub>2</sub> other gases 20 bar	
operating pressure	0.5 - 20 bar	
Order-No.	276-001	upon request
Inlet	G 2 F	
Outlet	G 2 F	
Pilot gas	G 1/8 F	
Pressure gauge	G 1/8 F	
Kv-Value	10	
Temperature range	-30 °C to +50 °C -22 °F to +122 °F	
Housing	Brass	Stainless steel (1.4404)
Cartridge	Stainless steel (1.4305)	Stainless steel (1.4404)
Diaphragm disk	Brass	Stainless steel (1.4404)
Membrane	CR (O <sub>2</sub> tested)	
Spring	Stainless steel (1.4310)	
Weight approx.	15 kg / 33 lb	

## Performance comparison



Model	Dimensions in mm					
	C	G	L	M	S	T
BPR 2	8.5	2" F	141	connection for pressure gauge	77	47



2 Set-Point Options

# DOME BACKPRESSURE REGULATOR DOME PRESSURE-SUSTAINING VALVE



Backpressure regulator 2" 276-001 (Flow capacity nitrogen, 20 °C)

