

# SAFETY RELIEF VALVE SV805 / 805A

0.5 up to 45.0 bar

**NEW – with smart-option**

See page 3



SV805



SV805-ES



SV805A



SV805A-ES

**Spring loaded, direct acting safety relief valve for venting excess pressure from receivers, pipelines and other equipment.**

### Benefits

- according to PED 2014/68/EU, category IV, Module B and D
- individual opening pressure
- TÜV-certification of pressure setting
- available in brass or stainless steel (ES)
- sealing material to suit gas or customer request
- compact size for easy, problem free installation
- range of inlet connections
- with / without condensation outlet
- protective dust cap
- SV805A (manual ventilation), for checking of safety function
- adapter for connection to ventilation pipe

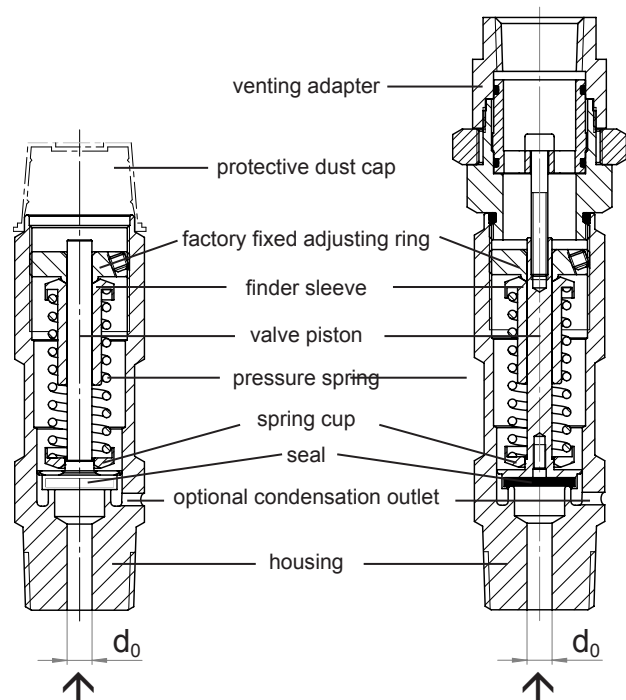
### Approvals

Manufactured and certified according to EN ISO 4126-1  
 Company certified according to ISO 9001  
 and PED 2014/68/EU Module H  
 CE-marked according to:  
 - PED 2014/68/EU  
 Cleaned for Oxygen Service according to:  
 - EIGA IGC Doc 13/12/E: Oxygen Pipeline and Piping Systems

**Other models, options and accessories available on request.**

**Please identify the individual gases, temperature, opening pressure, inlet connection and with or without condensation outlet at the time of enquiring!**

	SV805	SV805A
<b>Manual ventilation</b>	–	✓
<b>Opening pressure</b>	from 0.5 up to 45.0 bar	
<b>Gases</b>	all technical gases	
<b>Material</b>	housing and metal turned parts made of brass or stainless steel, pressure spring made of stainless steel, valve seal considering to the gas	
<b>Width across flats</b>	27 mm	
<b>Weight</b>	approx. 260 g	approx. 660 g
<b>Marking</b>	CE0045 TÜV*SV*18-931	
<b>Drill hole (d<sub>0</sub>)</b>	6.0 mm at 0.5 up to 25.0 bar 6.5 mm at > 25.0 up to 45.0 bar	
<b>Temperature range</b>	-60 °C/-76 °F up to approx. +150 °C/+302 °F (in accordance to gas and valve sealing)	
<b>Adapter</b>	for connection to ventilation pipe at the outlet	–



# SAFETY RELIEF VALVE SV805 / 805A

0.5 up to 45.0 bar



Flow capacity for air at 23 °C / 73.4 °F (valid only for atmospheric back pressure)

Opening pressure	[bar]	0.5	1	2	3	4	5	6	7	8	9	10	11
Volume flow	[m³/h]	15.7	23.5	35.9	48.3	60.6	73	85.4	97.7	110.1	122.3	134.7	147
Opening pressure	[bar]	12	13	14	15	16	17	18	19	20	21	22	23
Volume flow	[m³/h]	159.4	171.7	184.1	196.5	209.8	260.6	275.1	289.7	304.3	318.9	333.4	348
Opening pressure	[bar]	24	25	26	27	28	29	30	31	32	33	34	35
Volume flow	[m³/h]	362.5	375.5	390	404.5	419	433.4	448	462.4	476.9	491.5	505.9	520.4
Opening pressure	[bar]	36	37	38	39	40	41	42	43	44	45		
Volume flow	[m³/h]	534.9	549.4	563.9	578.4	592.9	607.4	621.9	636.3	650.9	665.3		

Version	Burst pressure of housing	Overall length [mm]		Inlet male thread (M)	Outlet female thread (F)	
		SV805	SV805A		SV805	SV805A
Brass	400 bar	90	137	G 1/4; 1/4" NPT G 3/8; 3/8" NPT M16 x 1.5; M18 x 1.5	M24 x 1	1/2" NPT
		95	142	G 1/2; 1/2" NPT G 3/4; 3/4" NPT M20 x 1.5		
Stainless steel (ES)	600 bar	96.5	143.5	G 1/4; 1/4" NPT; 1/4" VCR G 3/8; 3/8" NPT; 3/8" VCR M16 x 1.5; M18 x 1.5	M24 x 1	1/2" NPT
		101.5	148.5	G 1/2; 1/2" NPT; 1/2" VCR G 3/4; 3/4" NPT M20 x 1.5		

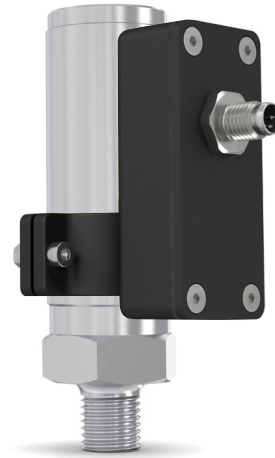
**Adapter (for SV805)** for connection to ventilation pipe at the outlet

Version	Adapter with O-ring seal	Order no.
Brass	M24 x 1 M - 1/2" NPT F	801413600K
	M24 x 1 M - 3/4" NPT F	802124900K
	M24 x 1 M - G 1/2 M with cone	802069800K
Galvanised steel	M24 x 1 M - 1/2" NPT F	801413703K
Stainless steel (ES)	M24 x 1 M - 1/2" NPT F	801727800K

# SAFETY RELIEF VALVE SV805 with smart-option



**SV805**  
with smart-option



**SV805-ES**  
with smart-option

**Top quality valves combined with high-tech sensors and electronic components – that’s the smart-option from WITT.**

	SV805 - with smart-option
<b>Opening pressure</b>	from 0.5 up to 45.0 bar
<b>Wetted materials</b>	housing and metal turned parts made of brass or stainless steel, pressure spring made of stainless steel, valve seal material depending on gas
<b>Width across flats</b>	27 mm
<b>Weight</b>	approx. 260 g
<b>Marking</b>	CE0045 TÜV*SV*13-931
<b>Drill hole (d<sub>0</sub>)</b>	6.0 mm at 0.5 up to 25.0 bar 6.5 mm at > 25.0 up to 45.0 bar
<b>Temperature range</b>	-30 °C/-22 °F up to +60 °C/+140 °F (depending on gas and seals)
<b>Power supply</b>	24 V DC
<b>Protection class</b>	IP 67
<b>Parameters</b>	open / closed
<b>Interface</b>	M8, 4-pin plug
<b>Digital output</b>	NPN / PNP open Collector
<b>Adapter</b>	for connection to ventilation pipe at the outlet

### Smart functions of safety relief valves

- signals its status: open or closed
- digital NPN / PNP open collector signal