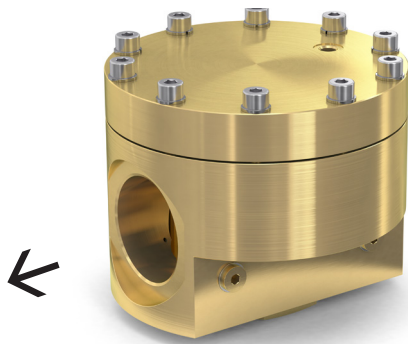
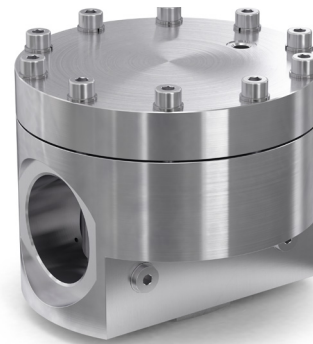


DOMESTIC BACKPRESSURE REGULATOR DOMESTIC PRESSURE-SUSTAINING VALVE



BPR 2



BPR 2-ES

Backpressure regulator for precise control of low and medium inlet pressures.

Features

- **Pilot Control Tube (PCT)**
One of the features enabling highly accurate control of inlet pressure
- **Balanced Seat Design (BSD)**
An inlet pressure balanced main valve ensures precision and high reliability
- Rapid and accurate monitoring of inlet pressure provides process reliability
- Available in brass or stainless steel (ES)
- Integrated connections for pilot gas and pressure gauges
- Inlet pressure regulation by external pilot pressure or proportional valve
- Simple to install and operate
Can be positioned at any angle / orientation
For indoor and outdoor installation.

Operation / Usage

Ideal for process gas supply where constant pressure is required. For example pressure regulation from gas cushions in tanks

Maintenance

Annual testing of body leak tightness is recommended depending on application.

Approvals

- Company certified according to ISO 9001, ISO 22000 and PED 2014/68/EU Module H
- CE-marked according to PED 2014/68/EU
- ATEX 2014/34/EU with ignition hazard analysis according to EN 1127-1, DIN EN 13463-1 and ZH1/200
- Analysed for Food Safety per HACCP-Analysis
- Fulfills the requirements of EU Regulations (EC) 1935/2004, and (EC) 2023/2006
- Fulfills the requirements of German Food and Feed (LFGB) Law, and is suitable for contact with food gases
- Designed for Oxygen Service in accordance with EIGA 13/20 and CGA G-4.4: Oxygen Pipeline and Piping Systems
- Cleaned for Oxygen Service in accordance with EIGA 33/18 and CGA G-4.1: Cleaning of Equipment for Oxygen Service

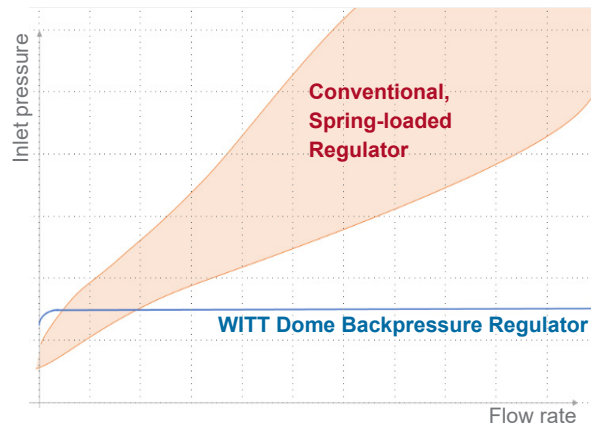
Available upon request

- Certificates and test reports
- Switchover systems / parallel supply systems
- Customer-specific / customised versions

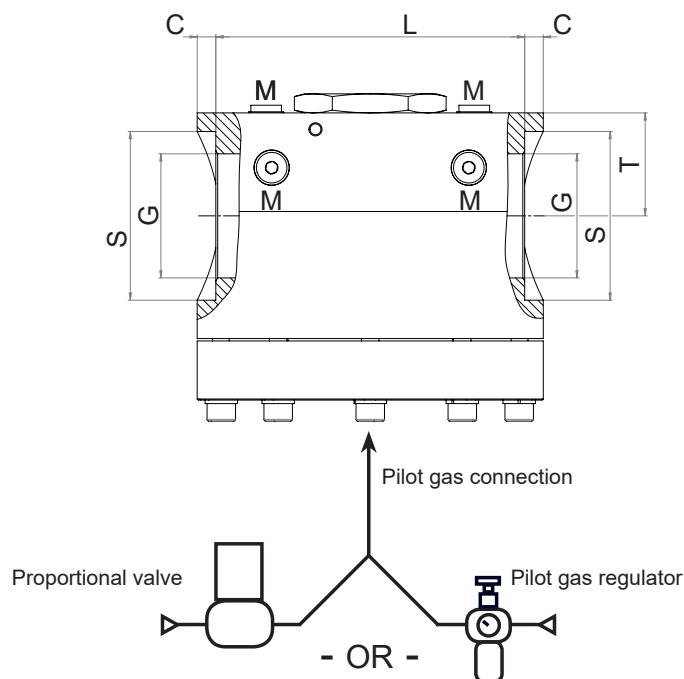
DOMESTIC BACKPRESSURE REGULATOR DOMESTIC PRESSURE-SUSTAINING VALVE

	Model	
	BPR 2	BPR 2-ES
max. inlet pressure	CO ₂ O ₂ other gases 20 bar	
operating pressure	0.5 - 20 bar	
Order-No.	276-001	upon request
Inlet	G 2 F	
Outlet	G 2 F	
Pilot gas	G 1/8 F	
Pressure gauge	G 1/8 F	
Kv-Value	10	
Temperature range	-30 °C to +50 °C -22 °F to +122 °F	
Housing	Brass	Stainless steel (1.4404)
Cartridge	Stainless steel (1.4305)	Stainless steel (1.4404)
Diaphragm disk	Brass	Stainless steel (1.4404)
Membrane	CR (O ₂ tested)	
Spring	Stainless steel (1.4310)	
Weight approx.	15 kg / 33 lb	

Performance comparison



Model	Dimensions in mm					
	C	G	L	M	S	T
BPR 2	8.5	2" F	141	connection for pressure gauge	77	47



2 Set-Point Options

DOME BACKPRESSURE REGULATOR DOME PRESSURE-SUSTAINING VALVE



Backpressure regulator 2" 276-001 (Flow capacity nitrogen, 20 °C)

